

# Comfort Construction

Quality From Start to Finish

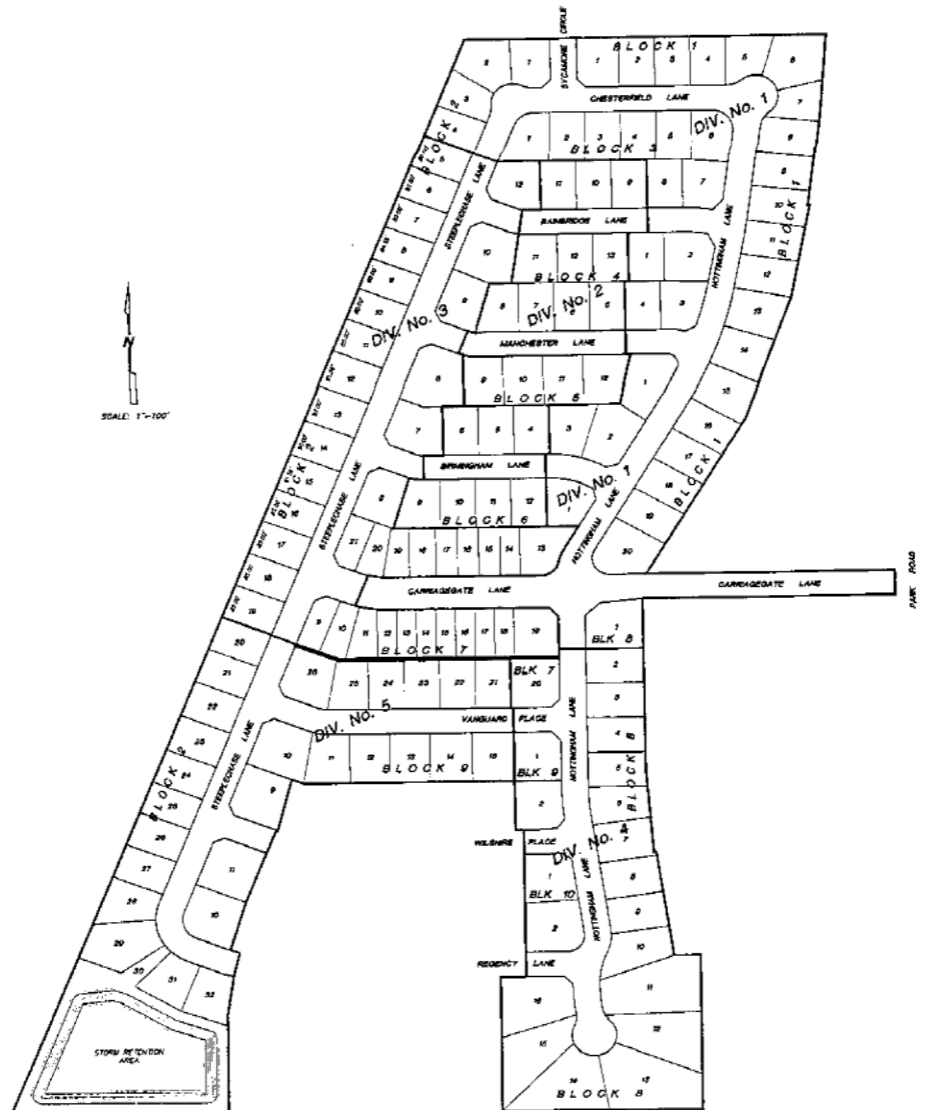


## Welcome to Carriagegate!

Carriagegate showcases Bungalow, Craftsmen, and Cottage style homes. The subdivision features tree-lined streets, and deep lots. All homes have spacious front porches and recessed garages. The subdivision is centrally located for all of your shopping and entertainment needs, and easy access to I-15 from Sunnyside.

### Carriagegate Pricing

Division	Price	Lot Size
<u>Division 1</u>		
Block 6		
Lot 1	\$34,900	0.250
<u>Division 3</u>		
Block 2		
Lot 10	\$29,900	0.220
Block 6		
Lot 13	\$31,900	0.274
Lot 19	\$31,900	0.270
<u>Division 4</u>		
Block 8		
Lot 7	\$37,900	0.280
Lot 10	SOLD	0.310
Lot 16	\$47,900	0.460
Block 10		
Lot 1	\$39,900	0.300
Lot 2	\$40,900	0.360
<u>Division 5</u>		
Block 2		
Lot 20	\$35,900	0.234
Lot 21	\$35,900	0.234
Lot 22	SOLD	0.248
Lot 23	\$36,900	0.248
Block 7		
Lot 21	SOLD	0.220
Lot 22	SOLD	0.220
Lot 23	\$32,900	0.220
Lot 24	\$32,900	0.220
Lot 25	\$34,900	0.226
Lot 26	\$41,900	0.314
Block 9		
Lot 10	SOLD	0.354
Lot 11	\$38,900	0.261
Lot 12	\$37,900	0.248
Lot 13	\$37,900	0.248
Lot 14	\$38,900	0.262
Lot 15	\$38,900	0.262



6549 S 5<sup>th</sup> W, Idaho Falls \* PH (208) 524-9004 \* FX (208) 524-9999  
 \* EMAIL [comfort@comfortconst.com](mailto:comfort@comfortconst.com) \* WEB [www.comfortconst.com](http://www.comfortconst.com)